

# Level Name

# Hanging Garden

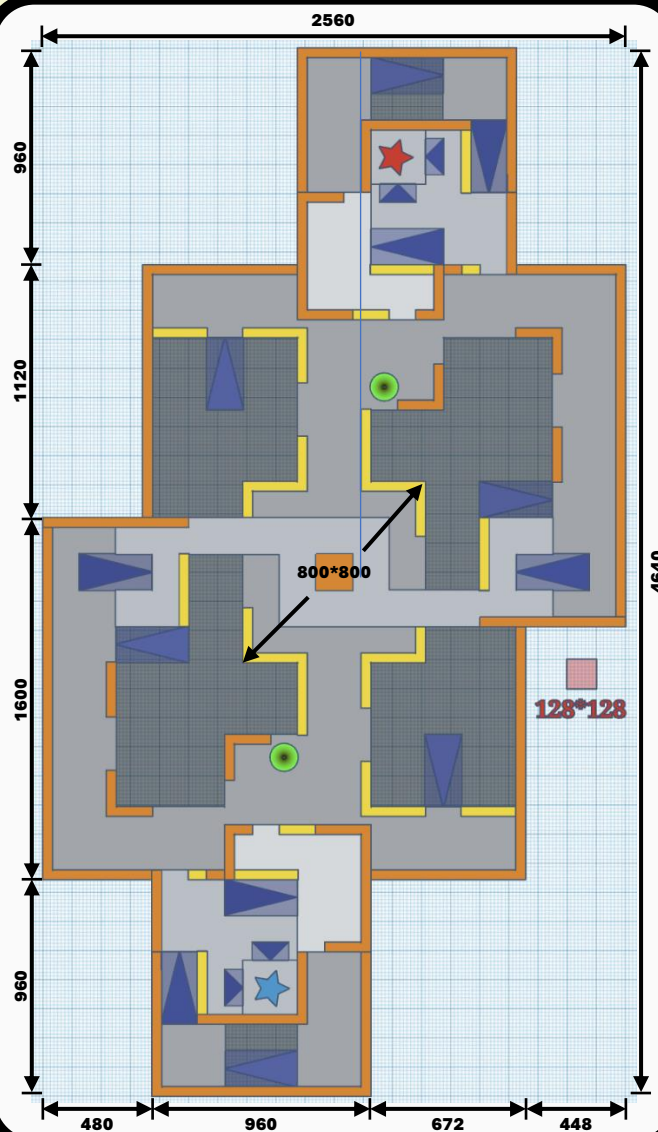
By Wilbur Wang

03/14/2024

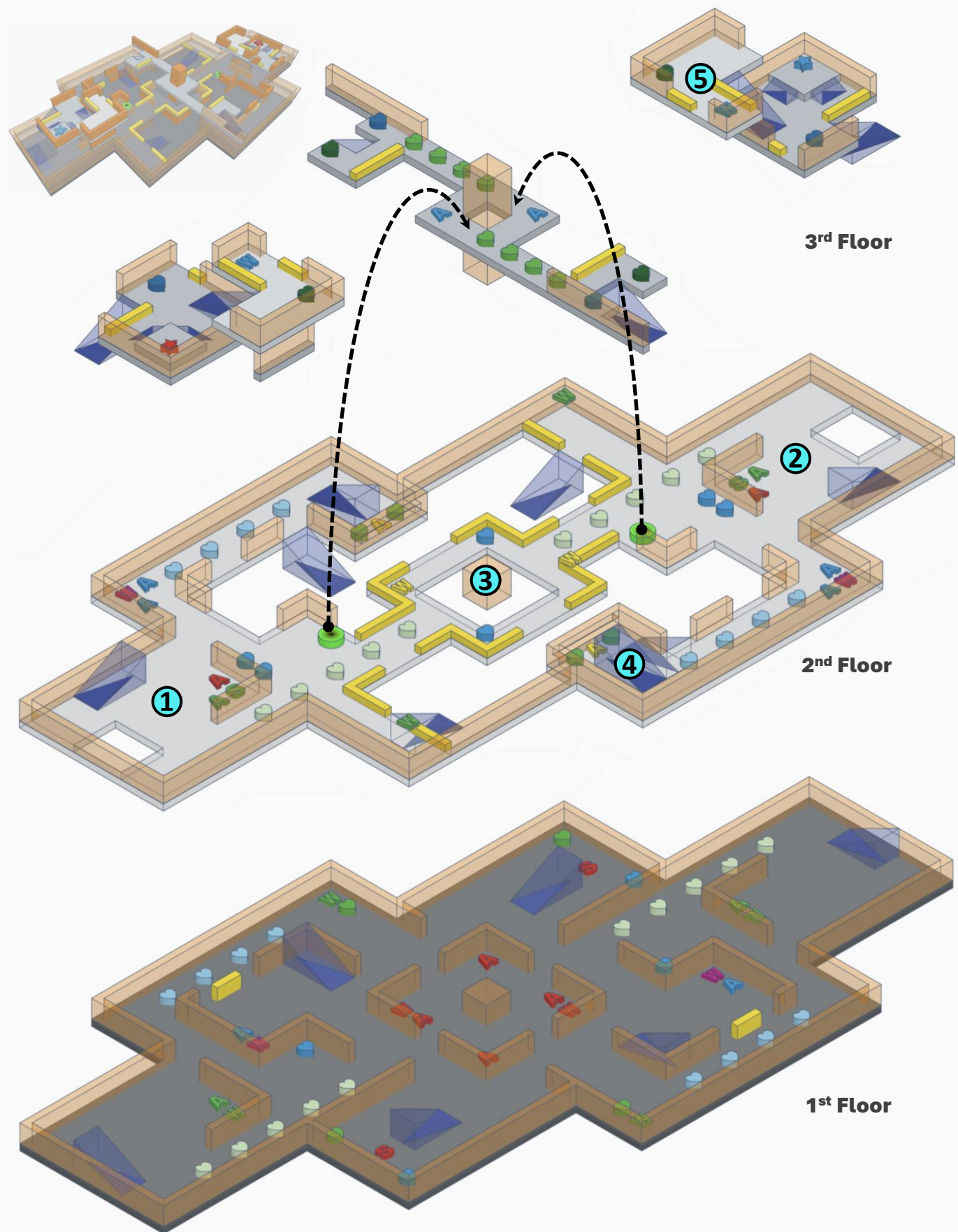
## Legend

4th Floor	Down Stair	A Shells	HealthKit - S
3rd Floor	W Shotgun	A Bullets	HealthKit - M
2nd Floor	W Machinegun	A Rockets	HealthKit - L
1st Floor	W Devastator	A Cells	Armor - S
Wall	W Crylink	S Strength	Armor - M
Cover	W Vortex	S Shield	Armor - L
Jump Pad	Red Flag	Blue Flag	

## Metric



## Layout Overview



## Aesthetics



Hanging Garden Reference [1]

The overall art style of this level is **modern**. The bases of the two teams are located in two buildings respectively. The main conflict area is located in the sky garden between the two buildings. The sky garden is axially symmetrical with the **central sculpture** as the center. There are three levels, players can choose multiple routes to reach the opponent's base.

[1] "DJI Sky City", Foster + Partners, Online. Available: <https://archello.com/story/115053/attachments/photos-videos/13>. [Accessed: 03/14/2024].

## Lighting



Lighting Reference [2]

The scene of this level is at **dusk**, so **warm orange** light is the main light outside this level. For indoors, use a **red light** source for the red team's base and a **blue light** source for the blue team's base.

[2] "DJI Sky City", Foster + Partners, Online. Available: <https://archello.com/story/115053/attachments/photos-videos/7>. [Accessed: 03/14/2024].

## Callouts

1. Red Team Base
2. Blue Team Base
3. Central Sculpture
4. Side Room
5. Balcony

## Win Condition

- Game Mode: Capture the Flag
- Player Count: 4-14
- Time Limit: 15min
- Round: 3
- Goal Score: 10 Frags